



@MarriottHelen



Health Education England

# The AHP workforce – HEE regional priorities

Helen Marriott

Regional Head of AHPs – Midlands and East of England

July 2019



Developing people  
for health and  
healthcare

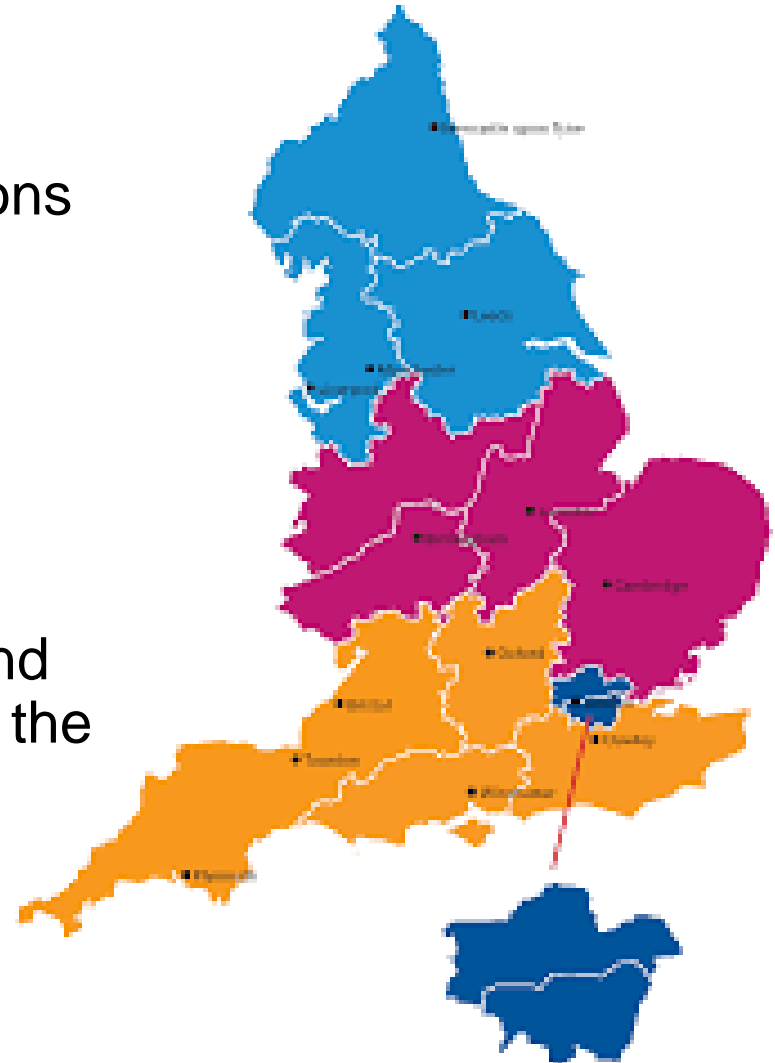
[www.hee.nhs.uk](http://www.hee.nhs.uk)

# Content

- My role within HEE
- HEE AHP regional priorities
- Opportunities...
- Questions/discussion

# Regional Head of AHPs

- Newly established role across the Midlands and East of England regions
- Started in post in January 2019
- Part-time (3 days per week)
- Similar role within the North East and Yorkshire, North West, London and the South regions



# Regional Head of AHPs

## Priorities

- Establish Midlands and East wide AHP network
- Support the development of an AHP Council within each STP/ICS across the region
- Develop a Midlands and East AHP Workforce Transformation board

## Leading on:

- Advanced Clinical Practice (ACP)
- RePAIR Implementation Programme

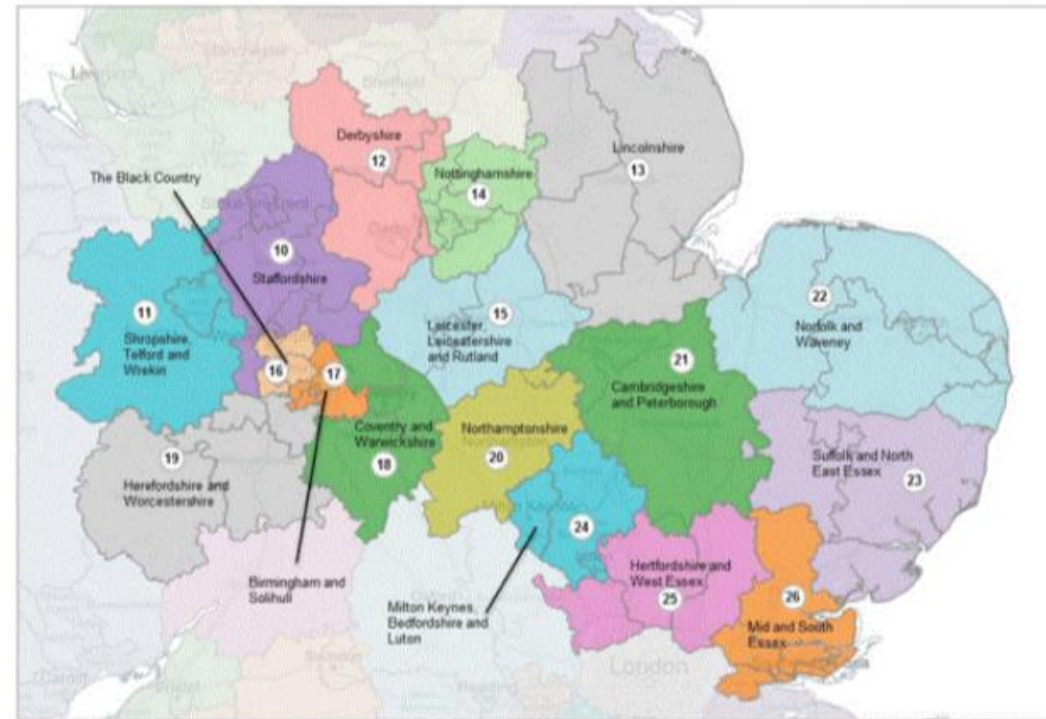
# HEE Midlands and East AHP Network

- Midlands and East wide AHP network – launched in April
  - <https://bit.ly/2ul2WXZ>
- Over 650 AHPs have joined the network
- Open to all AHPs
- **Benefits of joining the network:**
  - Stay up to date with the latest news, publications and information relating to AHPs
  - Shape and influence the work of HEE across the region
  - Sharing of good practice



# AHP STP/ICS Councils

- AHP Council within each of the 17 STPs/ICSs across the Midlands and East of England
- AHP system leadership and working
- Support STP/ICS and LWABs to recognise and address the key AHP workforce priorities



# STPs/ICSs - Midlands

Health Education England

Region	Local officers	STP/ICSs	AHP Council Chair
The Midlands	East Midlands	Leicester, Leicestershire and Rutland	Deanne Rennie
		Lincolnshire	Angela Shimada
		Northamptonshire	Melanie Paragreen
		Nottinghamshire	Della Money
		Derbyshire	Mary Heritage
	West Midlands	Staffordshire	Rachel McKeown
		Shropshire and Telford & Wrekin	Rachel McKeown
		Birmingham and Solihull	Seema Gudivada
		The Black Country	Samantha Dewis
		Coventry and Warwickshire	Rachel Kirkwood
		Herefordshire and Worcestershire	Miriam De Almeida Santos

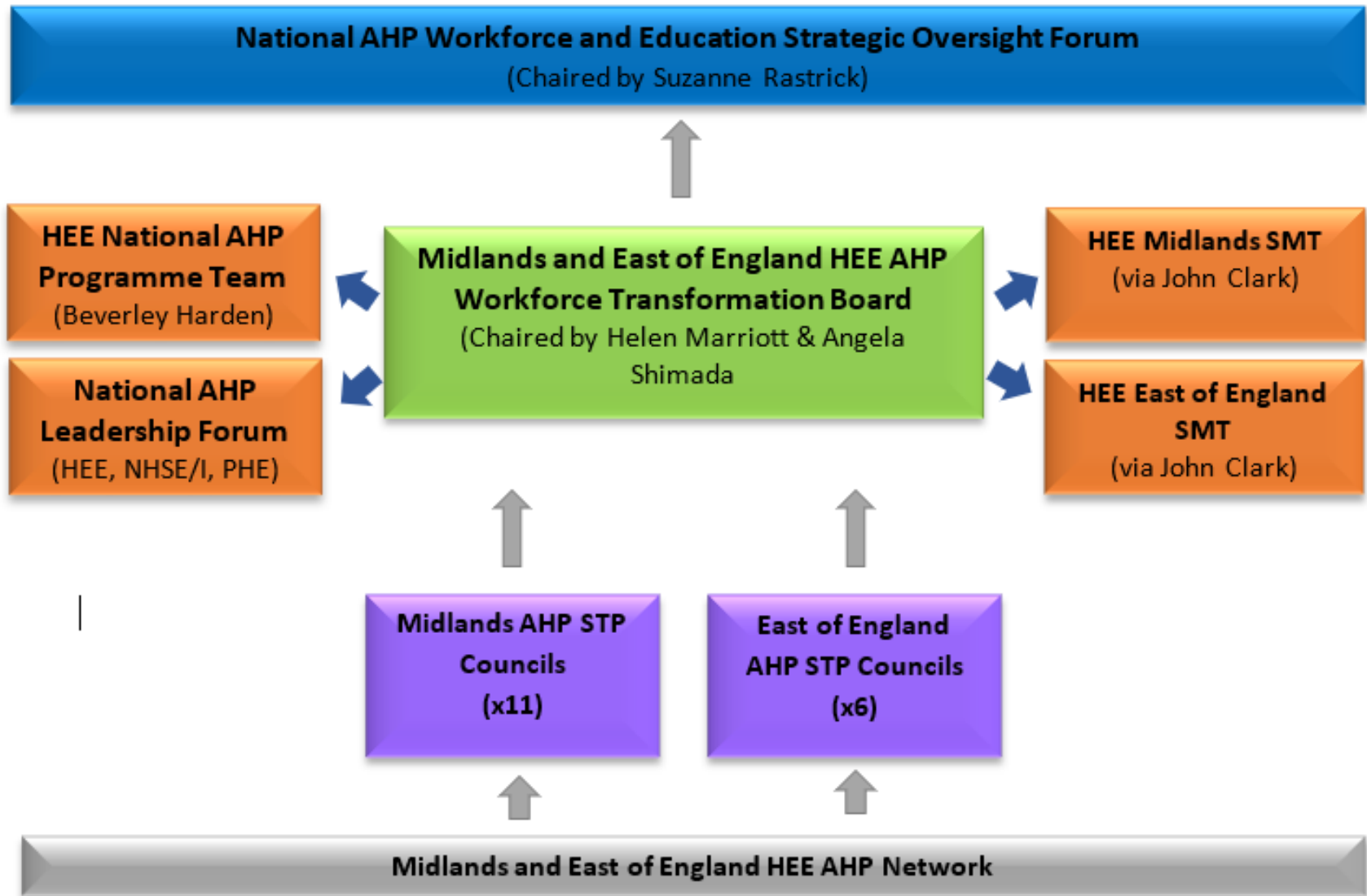
# STPs/ICSs - EoE

Region	Local Office	STP/ICSs	AHP Council Chair
East of England	East of England	Cambridgeshire and Peterborough	Rachel Wakefield
		Mid and South Essex	
		Norfolk and Waveney	Lindsey Lovatt
		Suffolk and North East Essex	Penny Cason
		Hertfordshire and West Essex	Sally Judges
		Bedfordshire, Luton and Milton Keynes	



# Midlands and East AHP Workforce Transformation Board

Health Education England

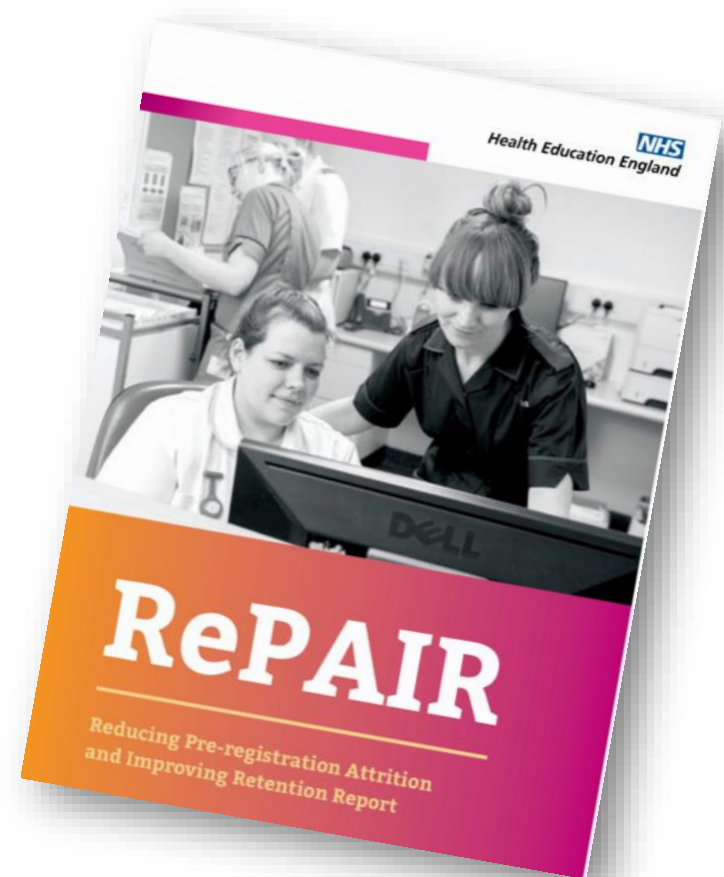


# RePAIR

## *Reducing Pre-registration Attrition and Improving Retention*

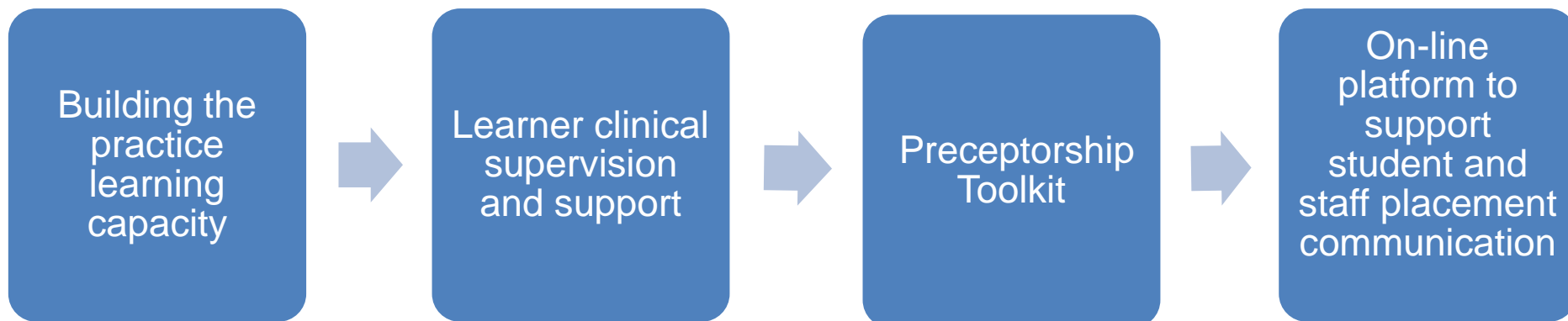
- In October 2018 HEE launched the outputs from the RePAIR project:
  - Toolkit – interactive PDF
  - Report
  - Executive Summary
  - Examples of good practice
  - 15 recommendations

Available online [here](#)



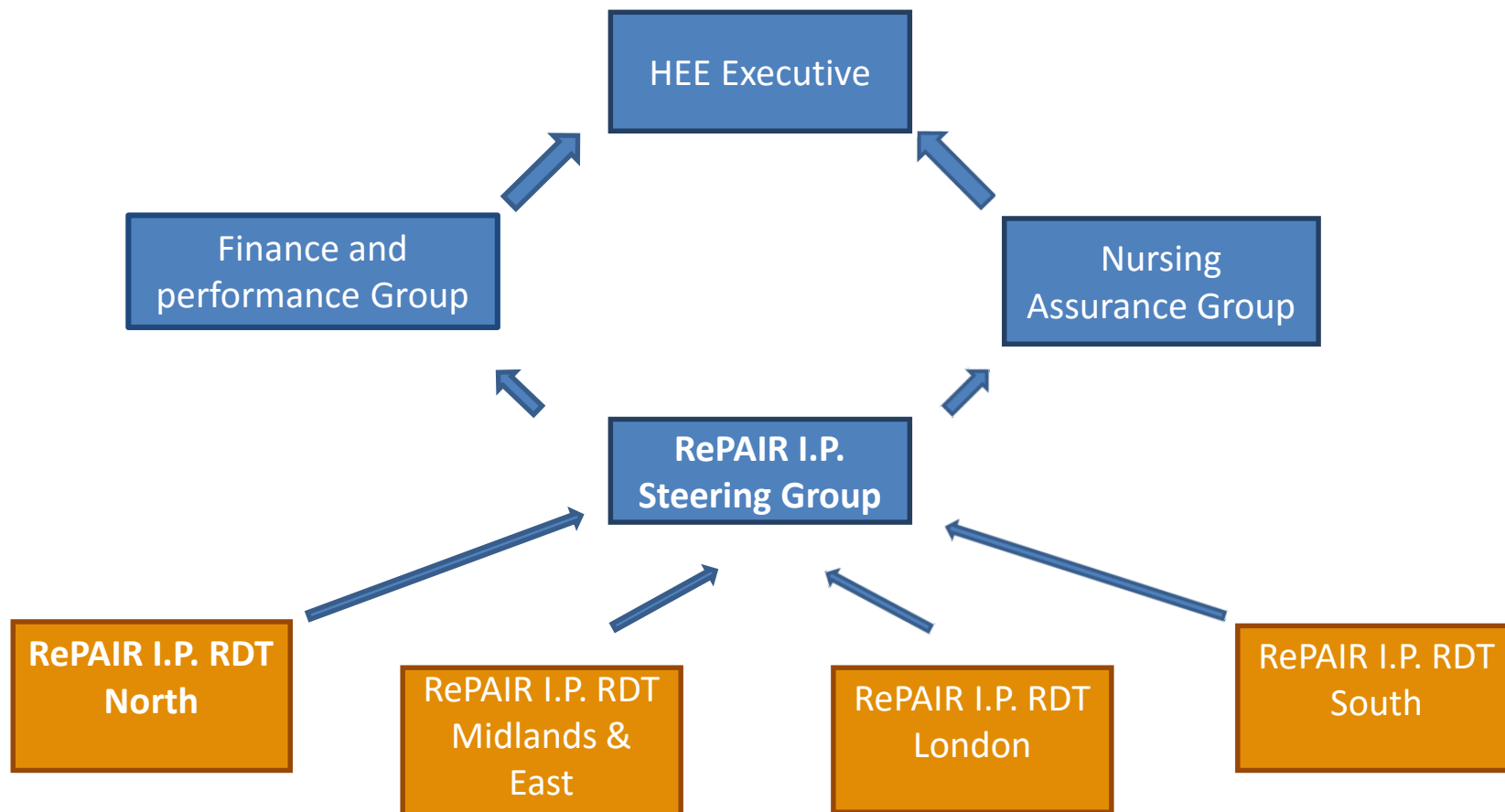
# RePAIR Implementation Project

- HEE has invested in supporting implementation of the recommendations from the RePAIR report and has themed these around four domains:



- 2 year programme initially
- Scope has been expanded to include all 14 allied health professions

# Operational Governance of RePAIR Regional Delivery Teams



# RePAIR Fellows

Recruiting x4 0.4WTE regional fellows to support the delivery of RePAIR I.P. across the region:

- A registered nurse, midwife or allied health professional.
- Working clinically with students studying programmes leading to registration in one of these regulated professions, or a member of staff at an HEI delivering one of these programmes.
- AFC band 7/8a or HEI equivalent salary
- Closing date for applications **23 July**
- Apply [here](#)



# National ACP Survey



Help us understand the shape and needs of people working at advanced practice level who align with the multi-professional framework.

# ACP Survey

- Due to be launched **July/August** and will run for 8 weeks
- Timely now to begin to collate the data required
- HEE regional workshops and online webinars to support completion of the census – invites will be circulated shortly
- The census for organisations will be made up of two separate questionnaires:
  - 1) An organisational questionnaire
  - 2) An individual practitioner questionnaire – organisational lead will be asked to forward this survey to individual employees for data protection reasons



- The WOW (World of Work) Show is a live online channel creating real-life encounters with the world of work to inspire young people about their futures.
- AHP show was streamed live into schools on 26 June
- You can now watch the show on demand through this link - <https://t.co/nkOySzi7nN>
- Overview of 14 AHPs and a focus on:
  - Podiatrists, therapeutic and diagnostic radiographers, ODPs, OT's, Dietitians
- Please use the on the demand show to promote AHP careers and continue to work with your local schools to ensure we all play a part in securing the future AHP workforce!



# Thank you

Helen Marriott  
Regional Head of AHPs  
HEE Midlands and East of England

[Helen.Marriott@hee.nhs.uk](mailto:Helen.Marriott@hee.nhs.uk)



@MarriottHelen

